

# Saltmeadow



## 152 Beach Sixth St Unit A

2 Bedrooms  
1 Bath

### Building

- Cedar accent walls
- Weathered zinc light fixtures
- Entry stairs featuring blue stone
- Flood-resilient design

### Residence

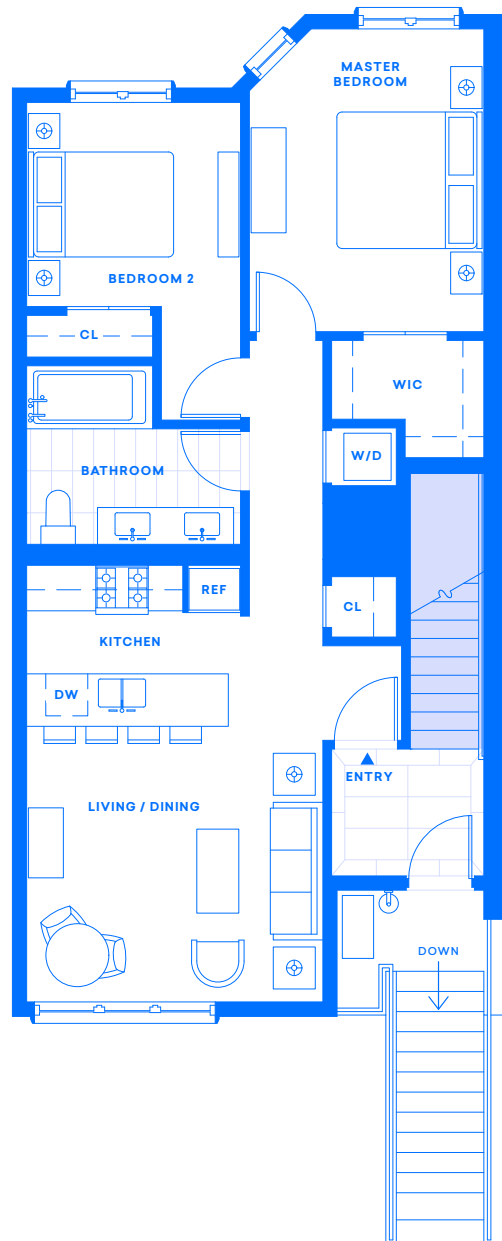
- Large windows up to 6 feet
- Bosch washer and dryer
- Satin nickel hardware throughout
- Custom plank floors throughout

### Kitchen

- Eat-in kitchen with double-sinks and island
- Marble kitchen counters and backsplash
- Satin nickel hardware
- Porcelanosa fixtures

### Bathroom

- Marble walls, floor and vanity top
- Satin nickel hardware
- Porcelanosa fixtures



718 395 4905

[INFO@SALTMEADOW.NYC](mailto:INFO@SALTMEADOW.NYC)

[SALTMEADOW.NYC](http://SALTMEADOW.NYC)



Owner's rental practices comply with the Fair Housing Act.

